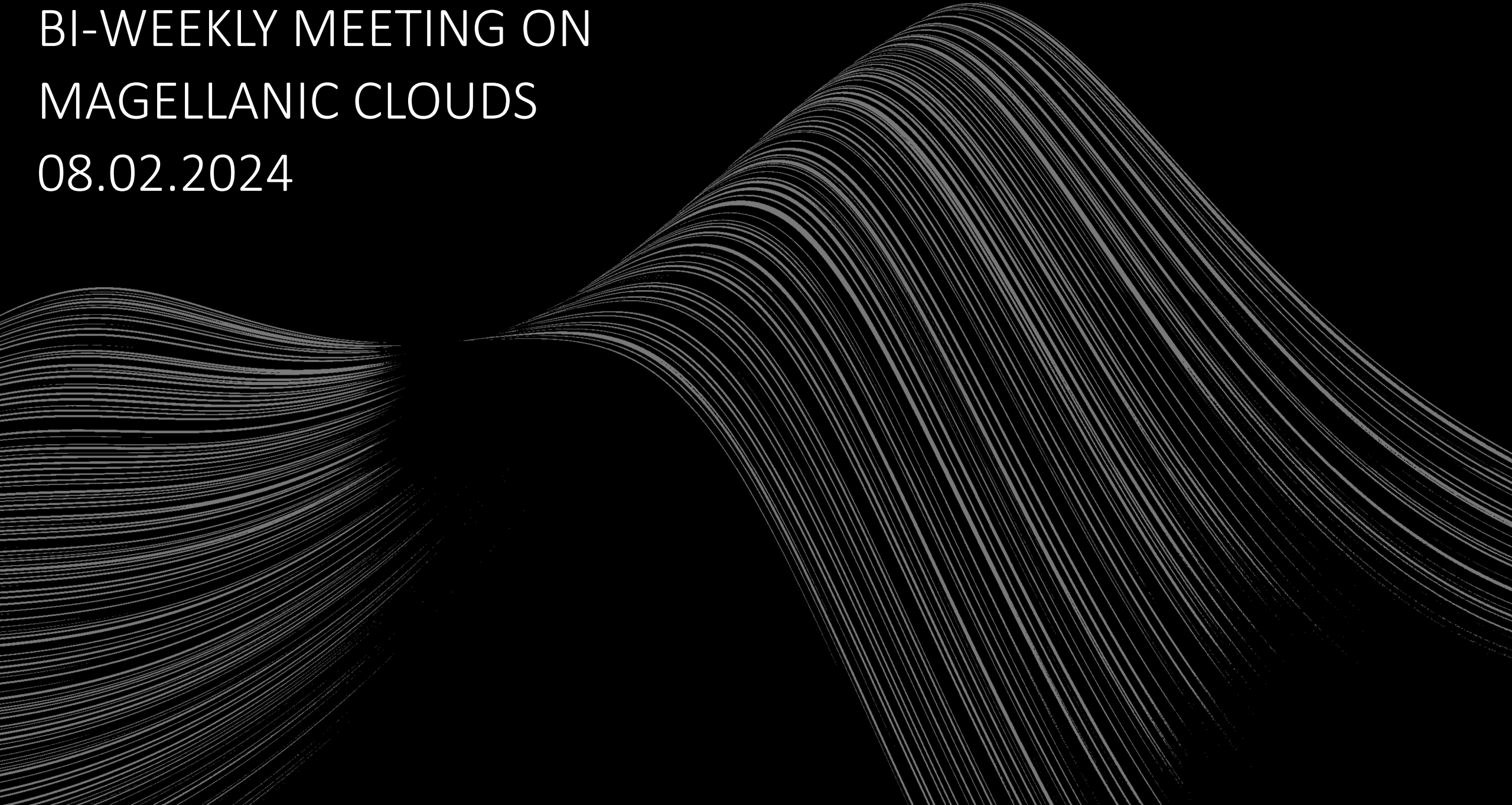


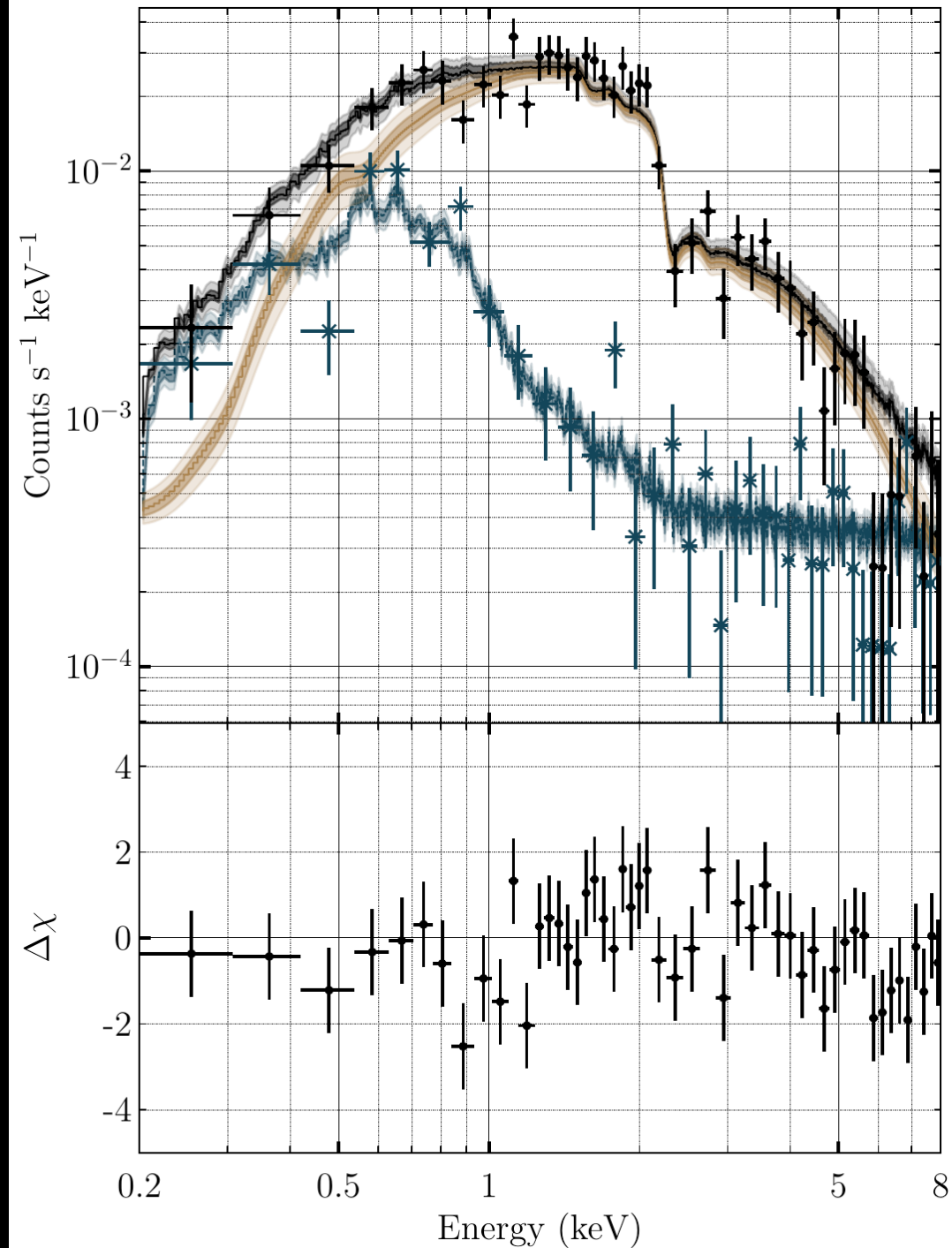
BI-WEEKLY MEETING ON
MAGELLANIC CLOUDS
08.02.2024



Data Analysis - HiMaXBipy

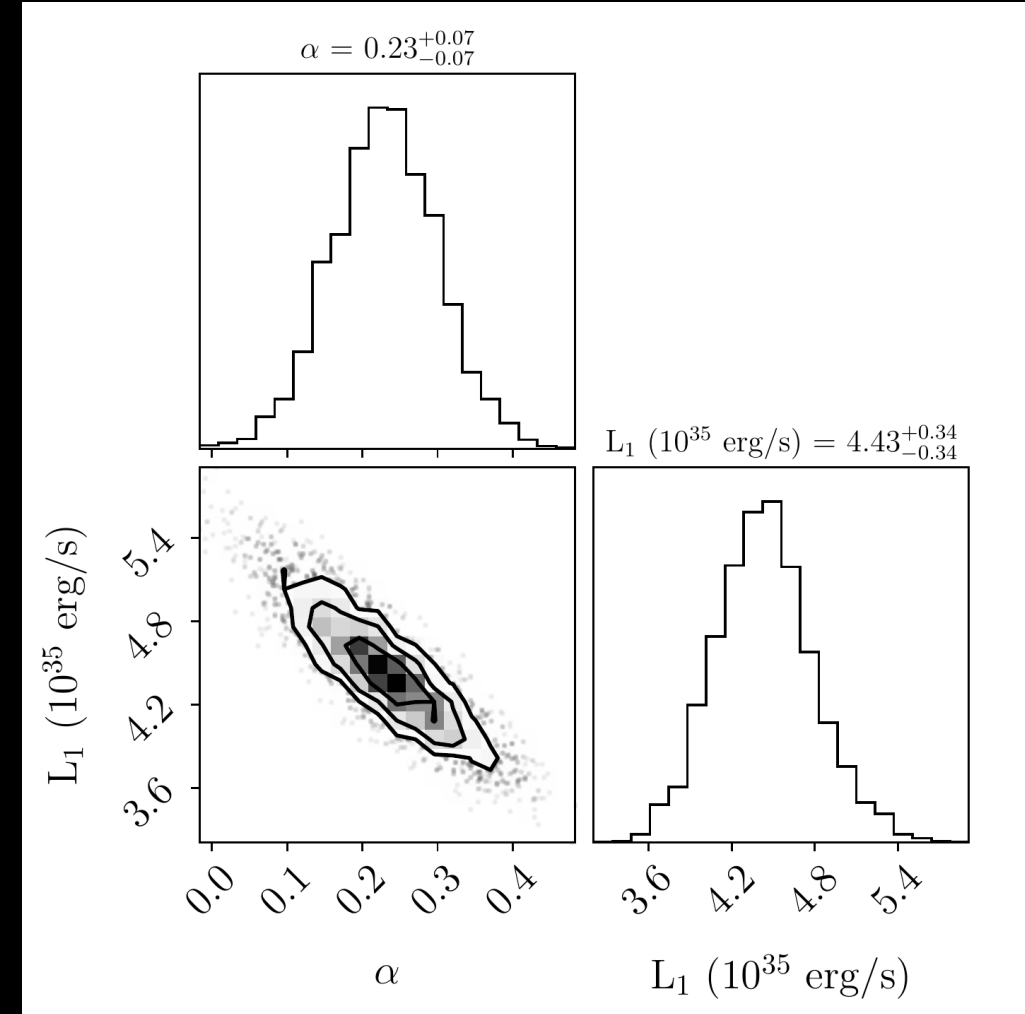
- Finished features:
 - Spectral fit for eROSITA
 - Except for model and energy ranges full automated
 - Spectrum also available without source model

1eRASS J052835.8-654233 - spectrum



Data Analysis - HiMaXBipy

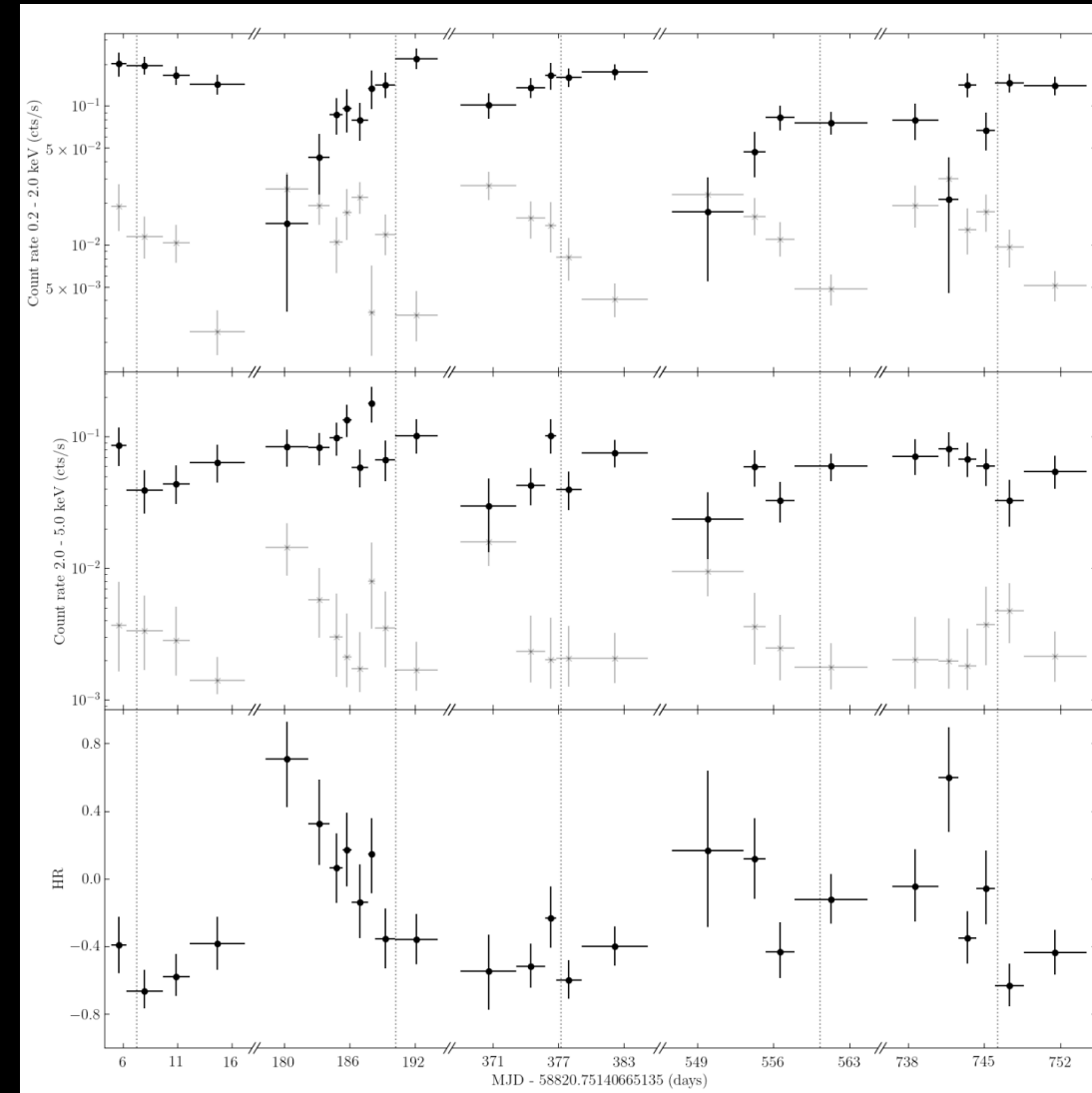
- Finished features:
 - Spectral fit for eROSITA
 - Except for model and energy ranges full automated
 - Spectrum also available without source model



1eRASS J052835.8-654233 – Luminosity corner plot

Data Analysis - HiMaXBipy

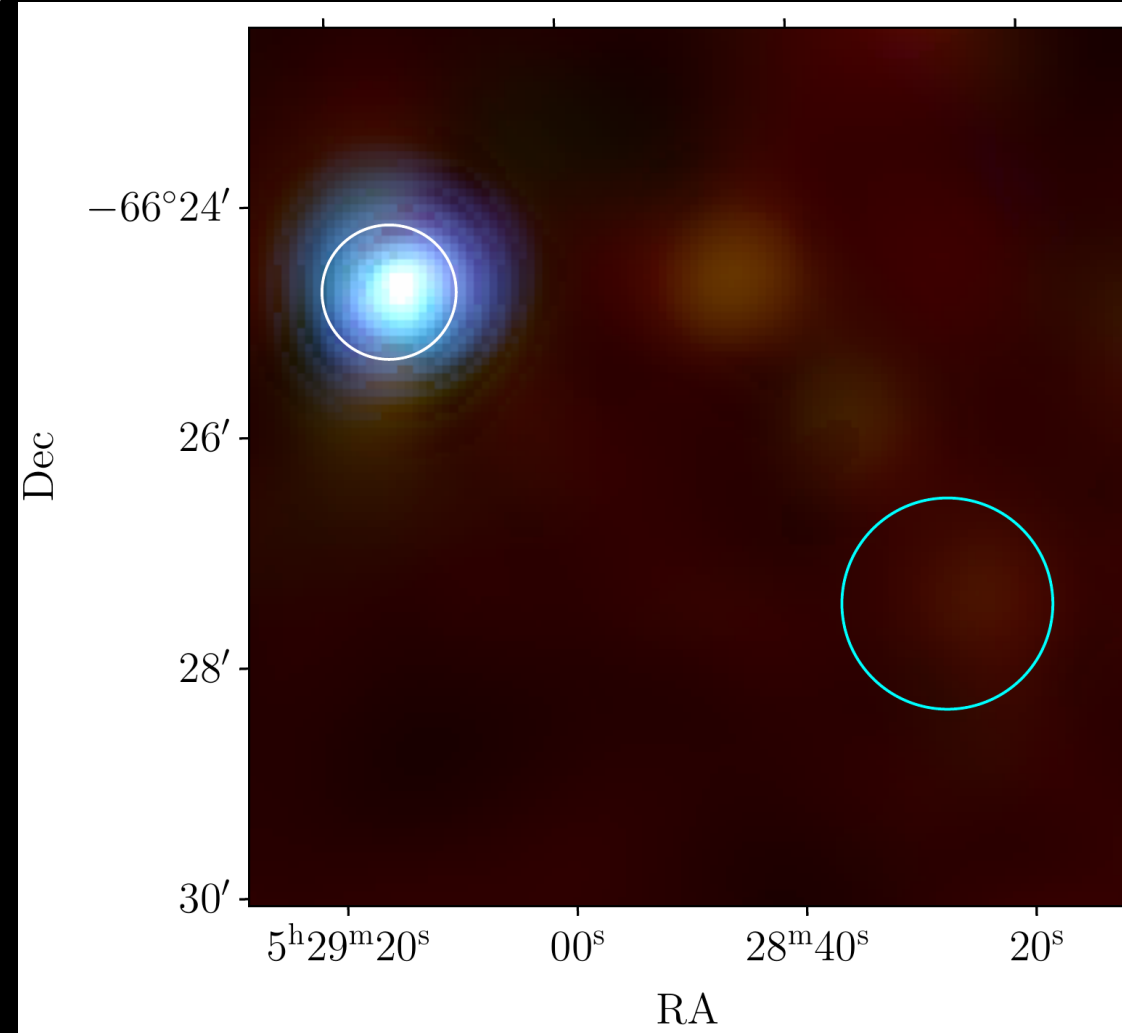
- Finished features:
 - Spectral fit for eROSITA
 - Lightcurves with removed white space
 - HR lightcurve



1eRASS J052835.8-654233 - HR LC

Data Analysis - HiMaXBipy

- Finished features:
 - Spectral fit for eROSITA
 - Lightcurves with removed white space
 - HR lightcurve
 - RGB image creation
- Open:
 - Simultaneous spectral fit with XMM
- Current full-run: 1.5h – parallelisable to some degree

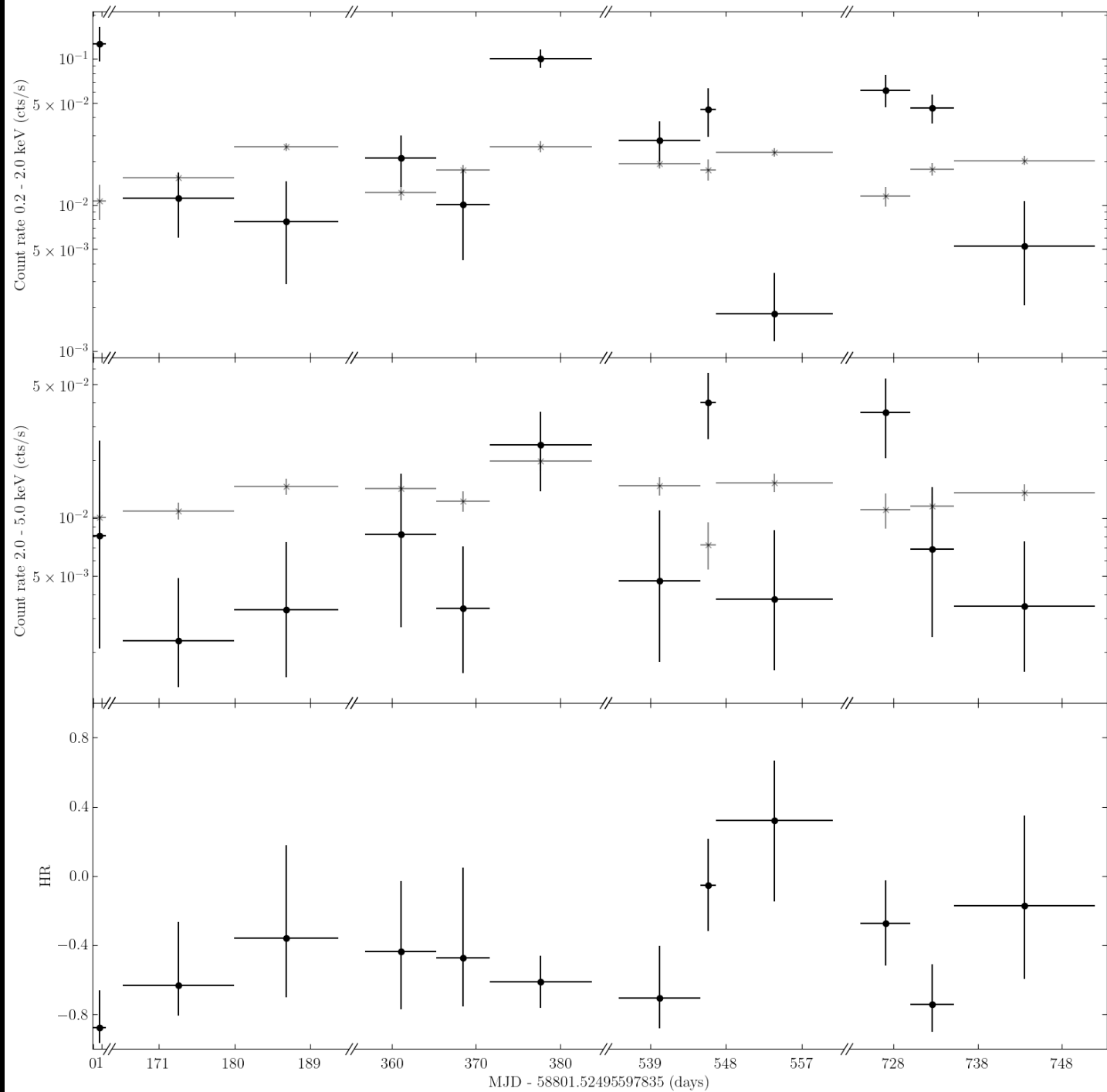


1eRASS J052835.8-654233 – RGB

HR LC Special cases

- SFXT candidate

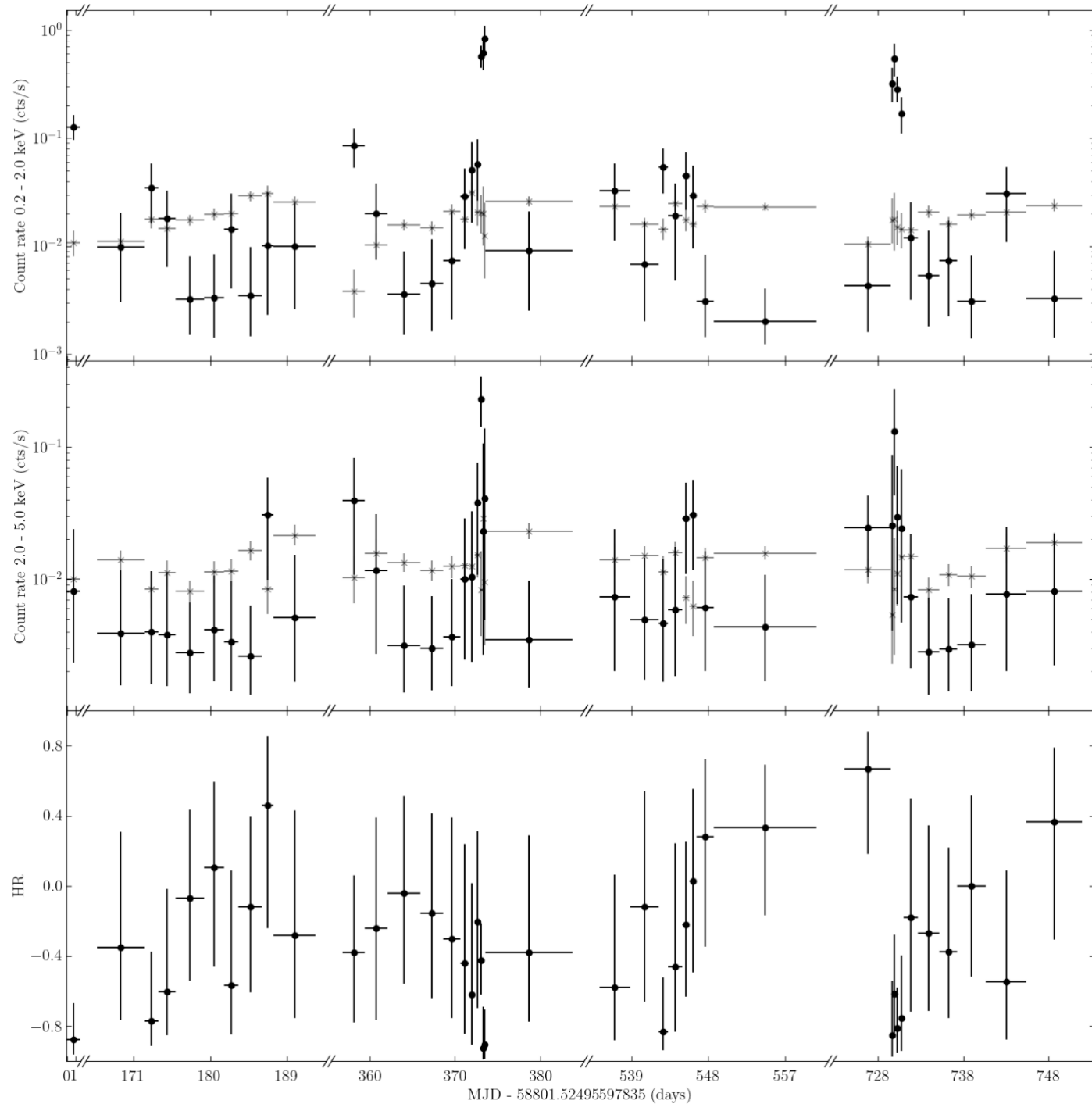
1eRASS J054422.1-672732 - HR LC (min. 10 counts per bin)



HR LC Special cases

- SFXT candidate

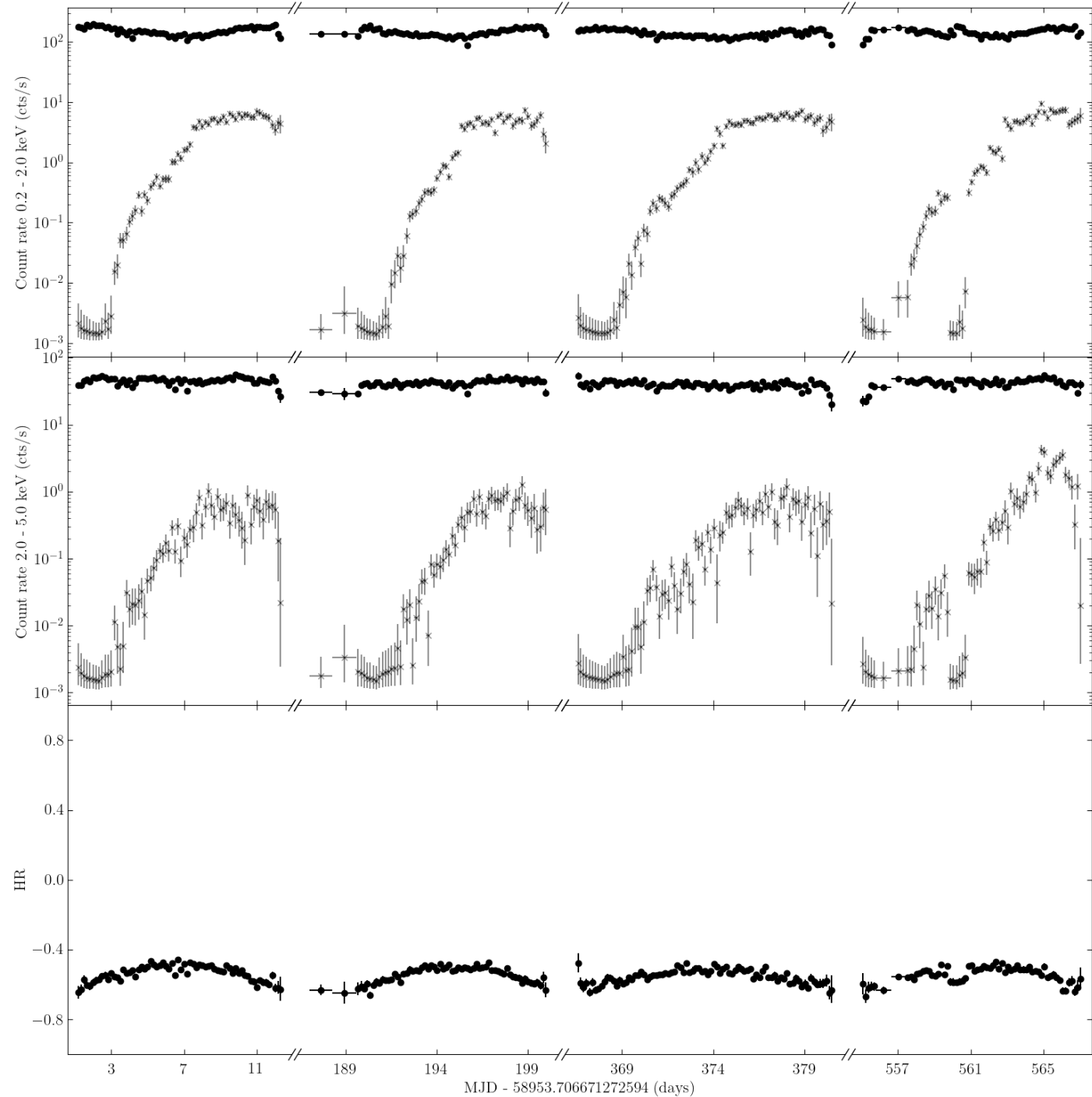
1eRASS J054422.1-672732 – HR LC (min. 1 counts per bin)



HR LC Special cases

- SFXT candidate
- Bright object

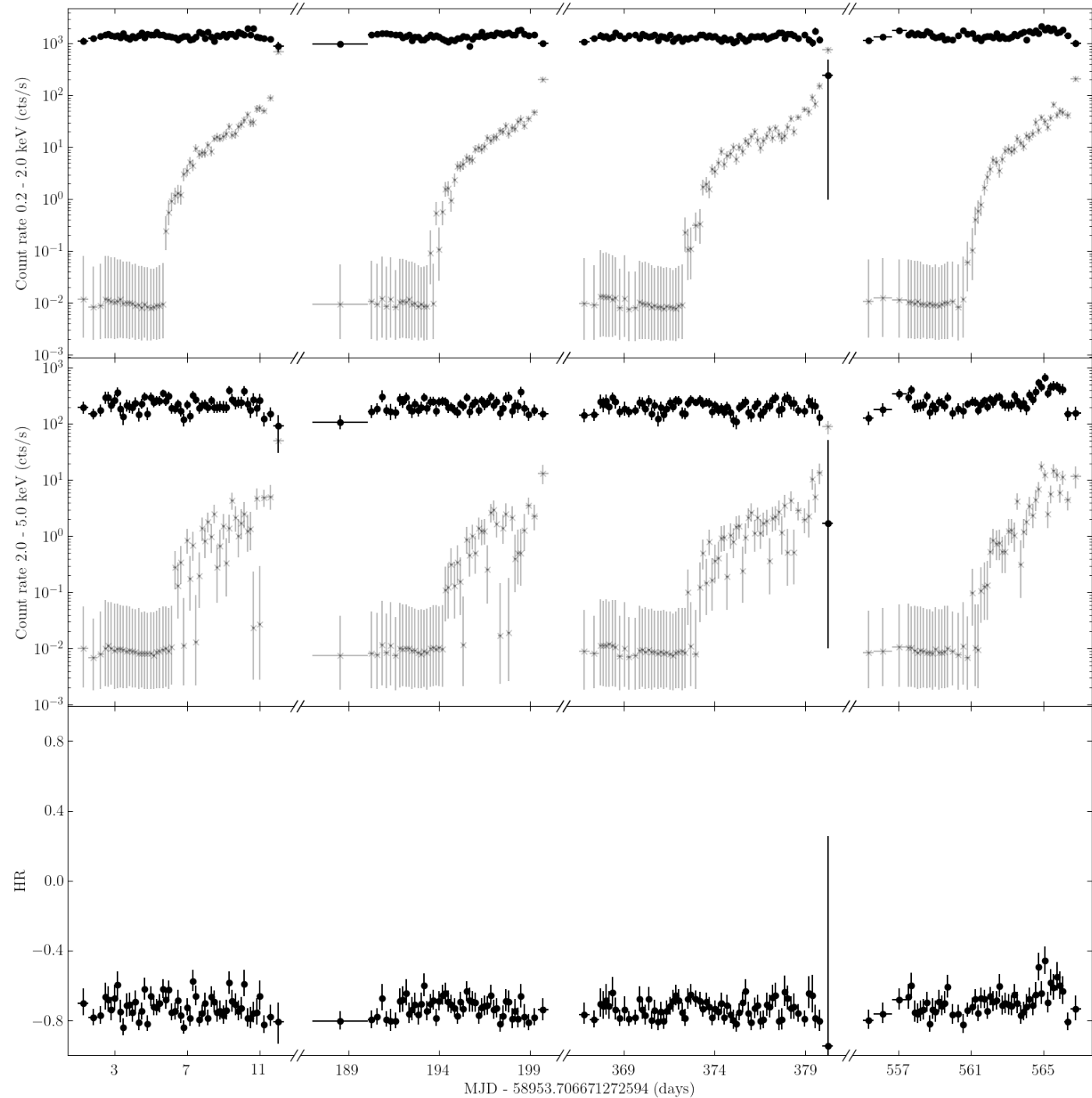
LMC X-1 – HR LC (circular on-extraction region, 1 bkg region)



HR LC Special cases

- SFXT candidate
- Bright object

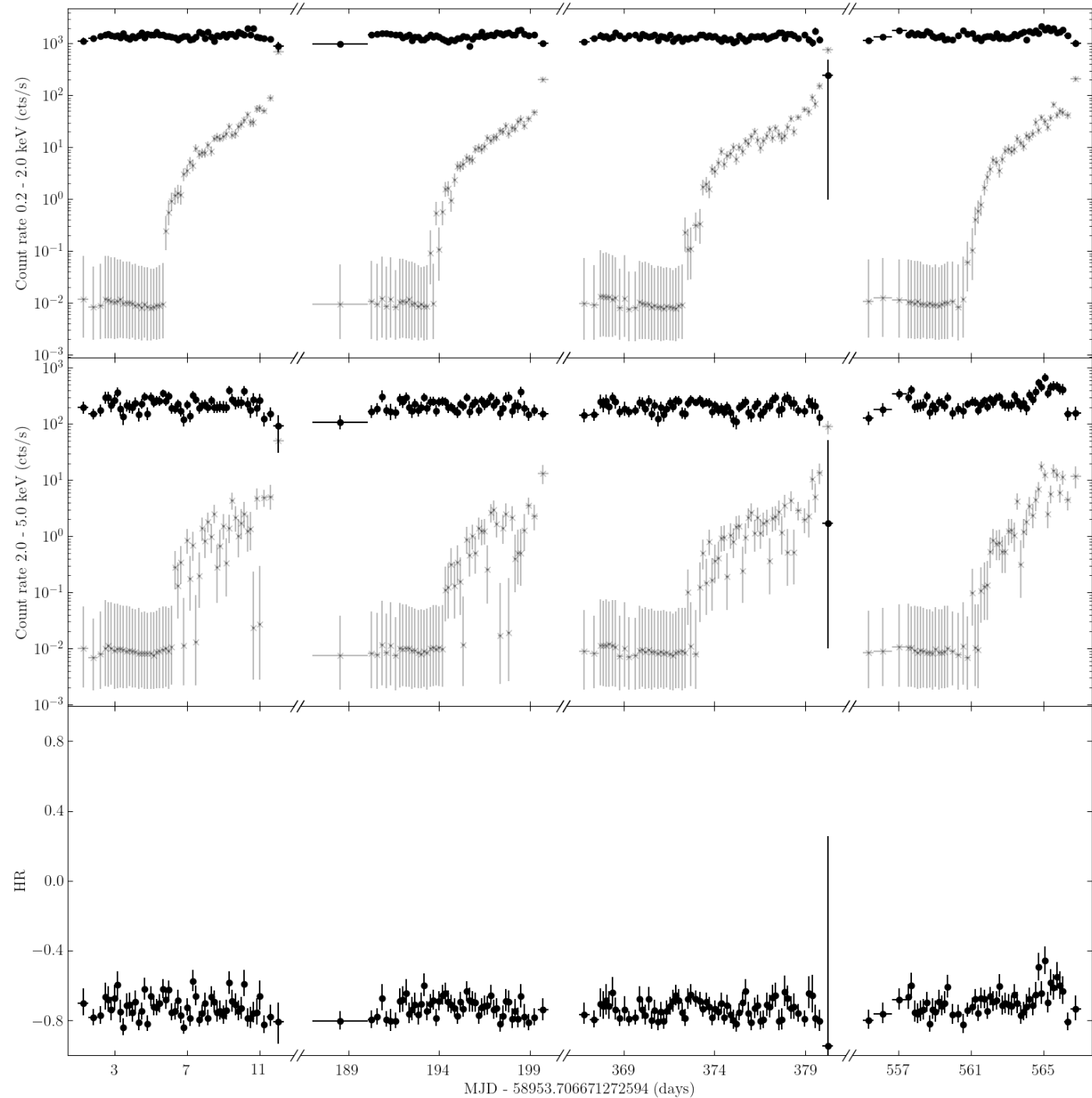
LMC X-1 – HR LC (annulus on-extraction region, 1 bkg region)



HR LC Special cases

- SFXT candidate
- Bright object

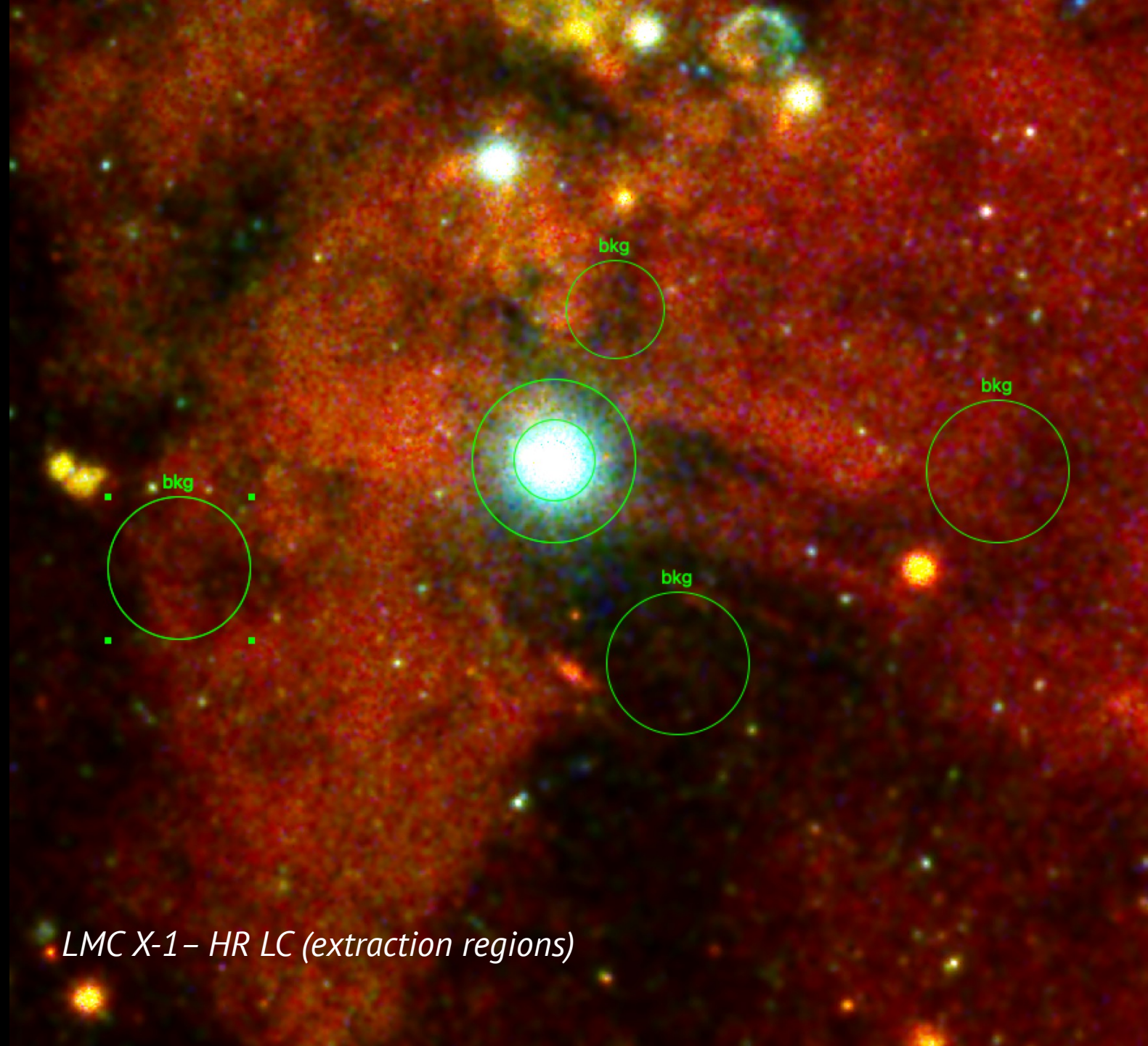
LMC X-1 – HR LC (annulus on-extraction region, 1 bkg region)



HR LC

Special cases

- SFXT candidate
- Bright object
 - Bkg region on the right used so far
 - Next test adding the left
 - If necessary adding the others



LMC X-1 – HR LC (extraction regions)